

Interactions Hôtes- Parasitoïdes

Minus van Baalen
CNRS / Laboratoire d'Ecologie

Plan

- Biologie des parasitoïdes
- Dynamique des populations
- Persistance
- Aspects évolutifs

Parasitoïde



<http://www.idw-online.de>

cherchant des larves cachés



CPB Silwood Park

de *Drosophila melanogaster*

Oviposition



<http://muextension.missouri.edu>

Oviposition



<http://www.anbp.org>

Emergence

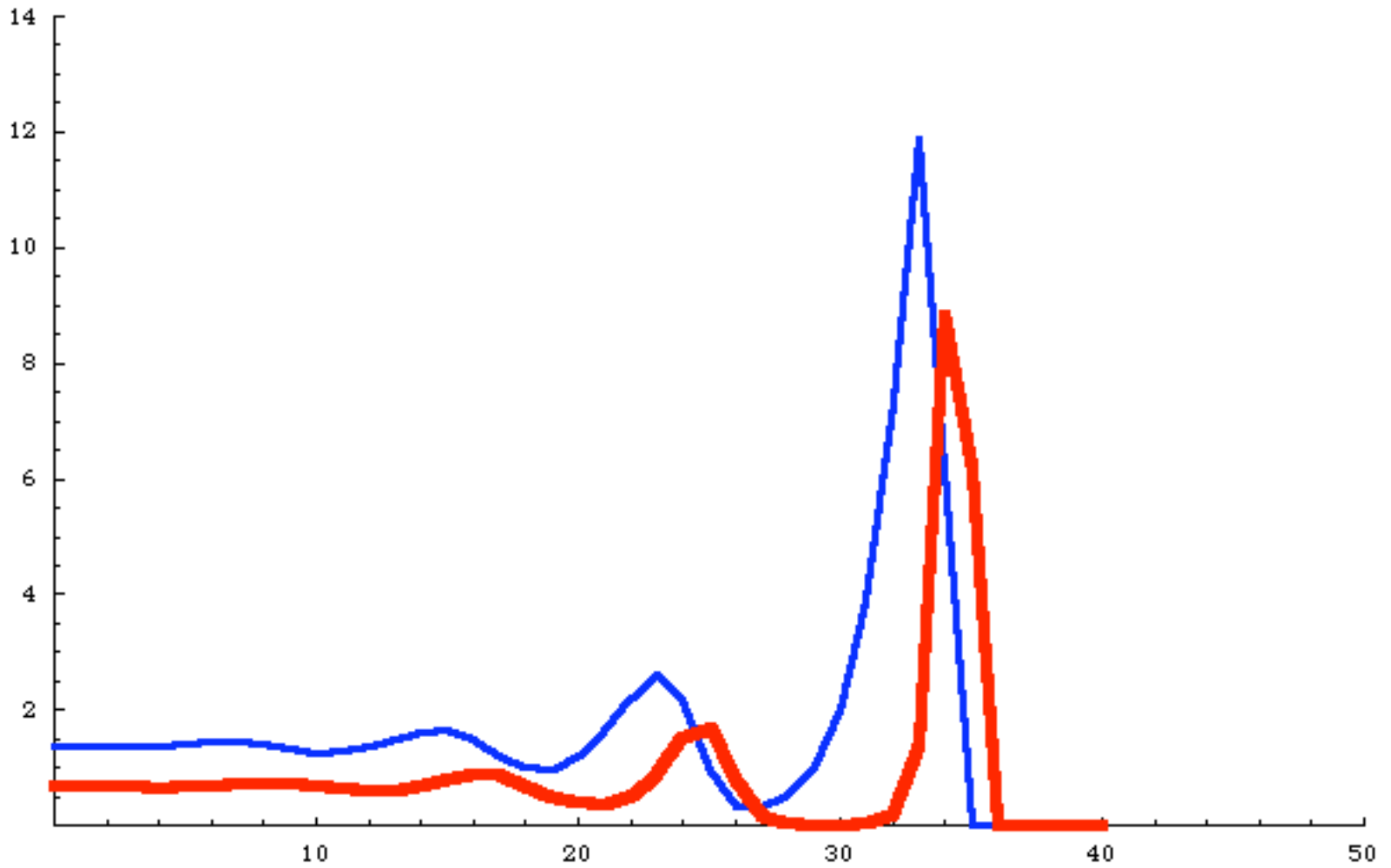


<http://whatcom.wsu.edu>

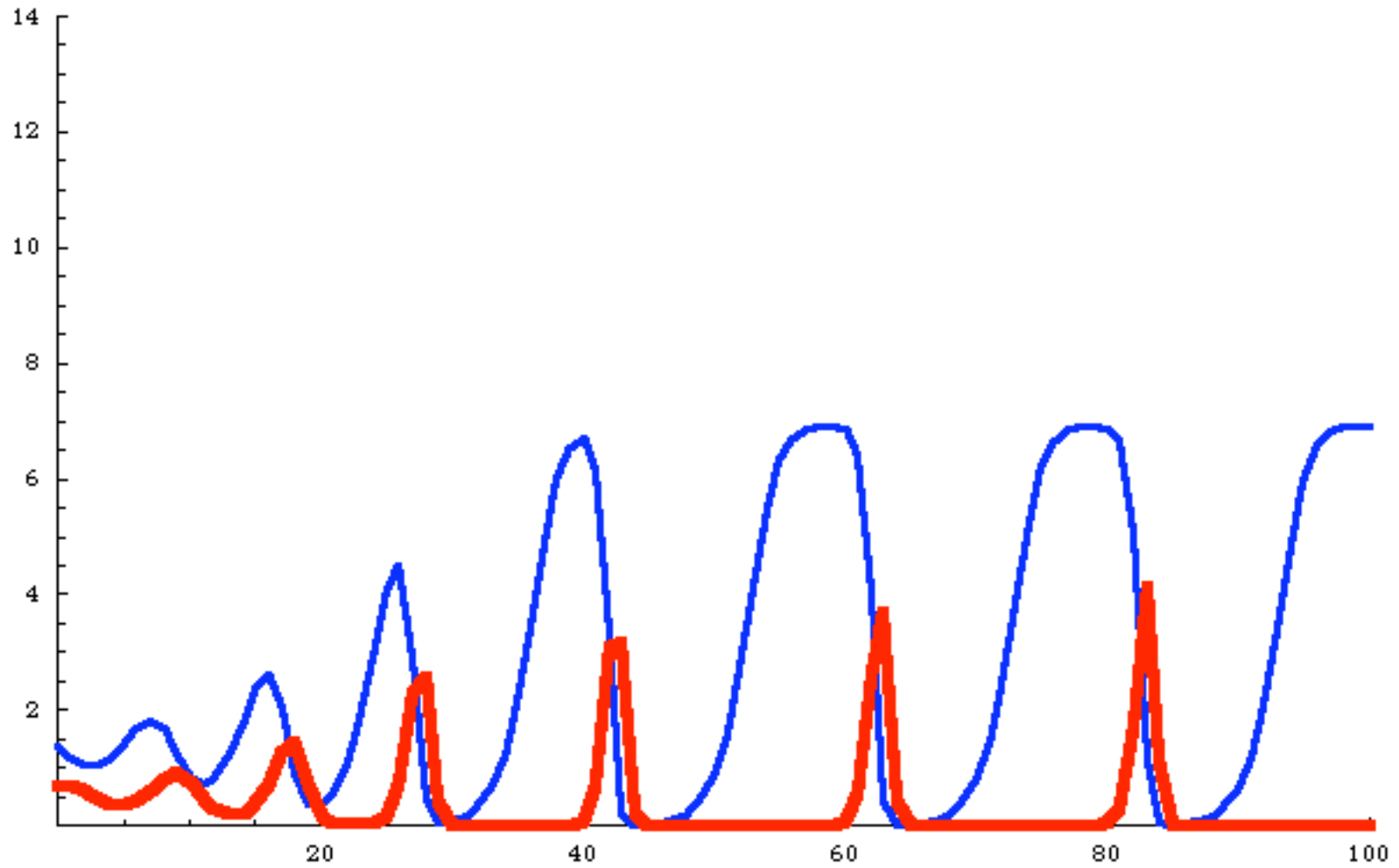
Cycle de vie



Nicholson-Bailey



NB plus compétition



Hétérogénéité



Localisation

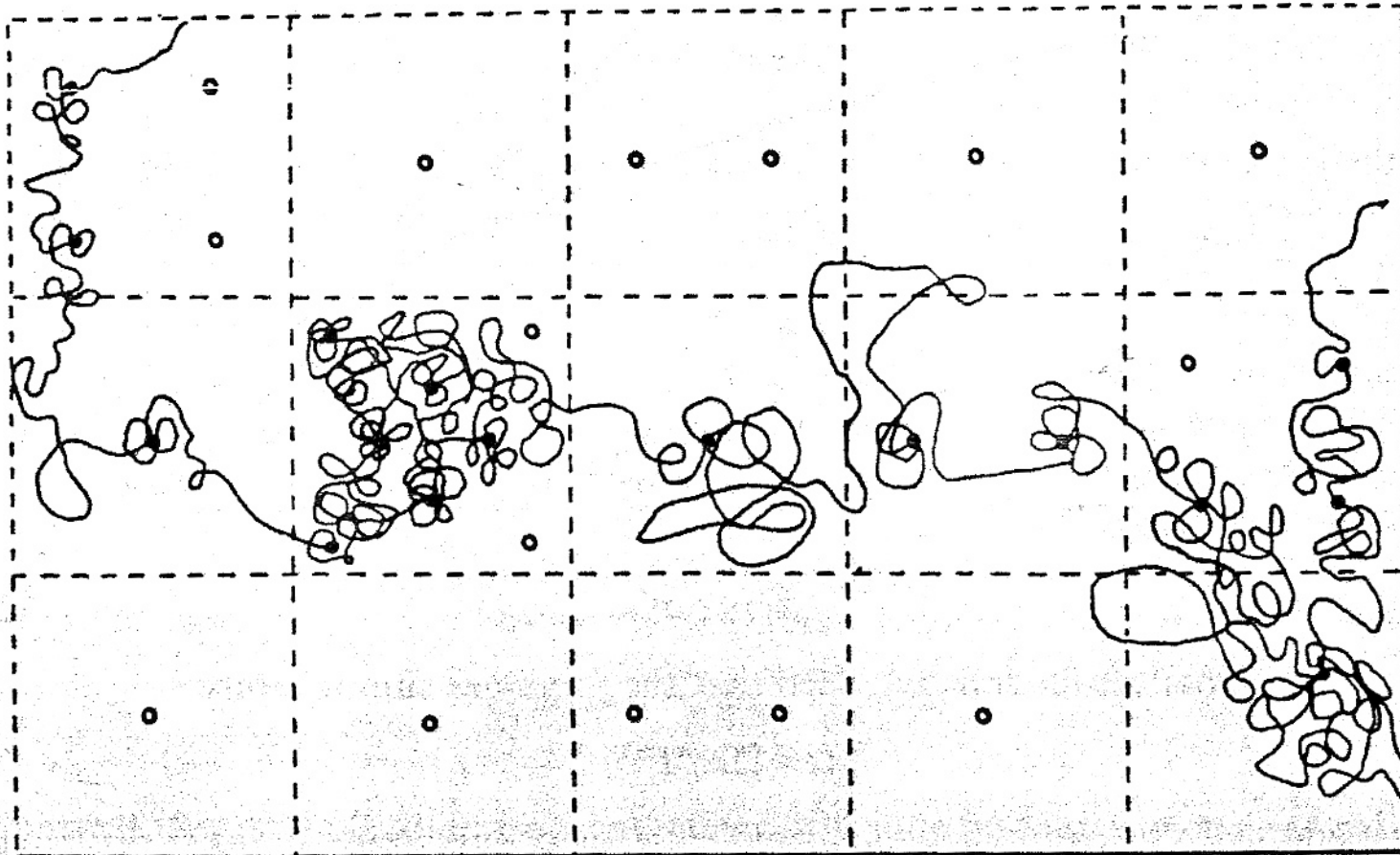


FIG. 9. Part of a track showing the movements of a tachinid parasite *Cyzenis albicans*, within an arena. The circles represent small drops of sugar solution upon which the parasite adults feed. The solid circles show where feeding occurred.

Aggregation

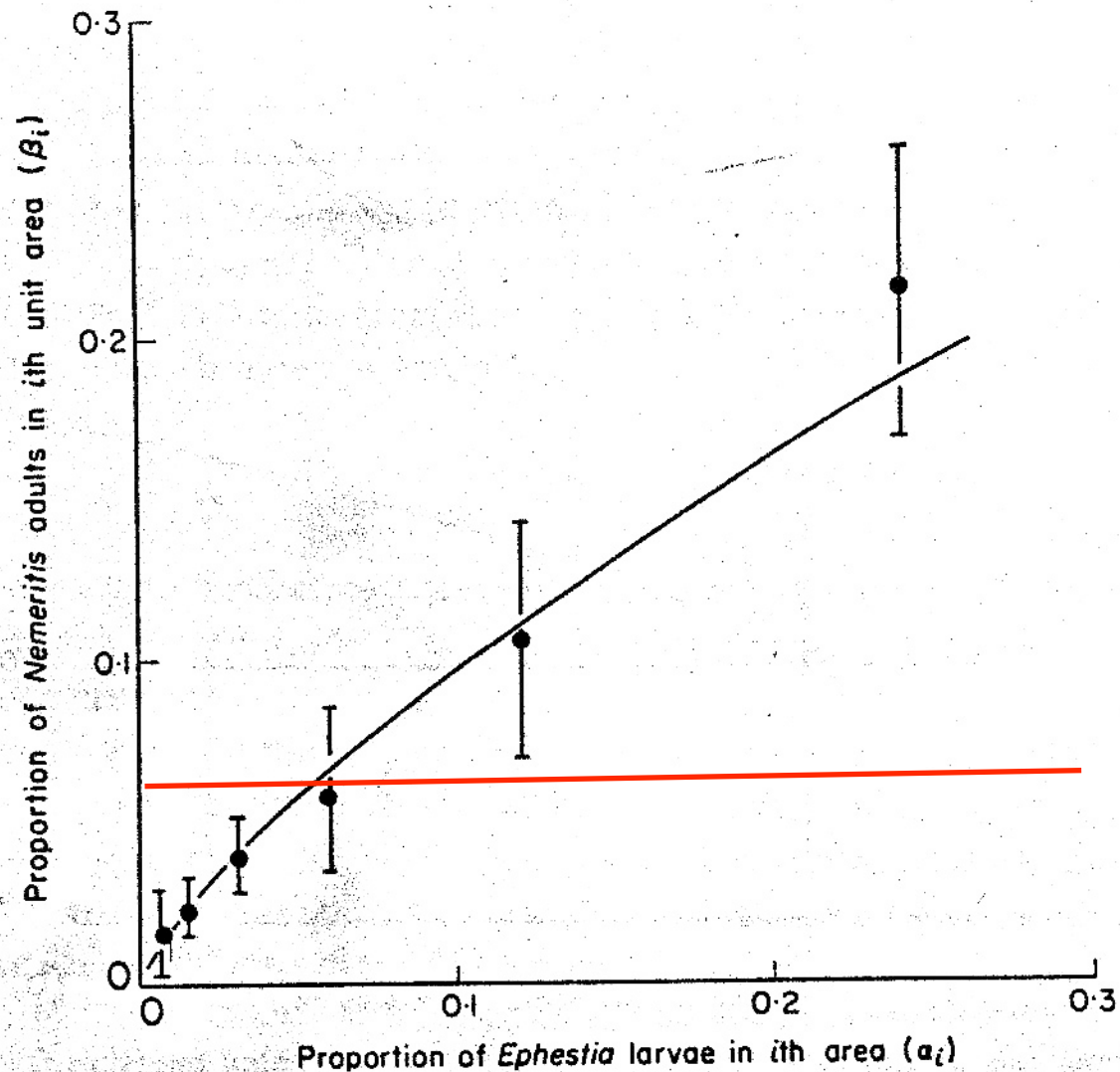


FIG. 11. The relationship between the proportion of searching *Nemeritis canescens* (β_i) and the proportion of *Ephestia cautella* larvae (α_i) per unit area from a laboratory interaction (Hassell 1971a, b). The fitted curve was derived by use of eqn (22). $\beta_i = 0.53 \alpha_i^{0.73 \pm 0.04}$.